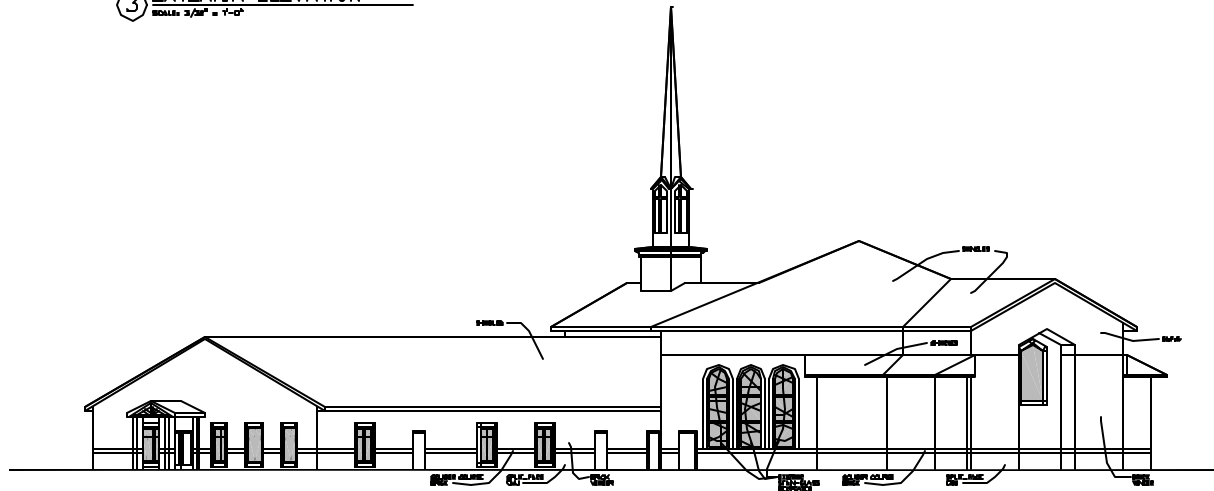
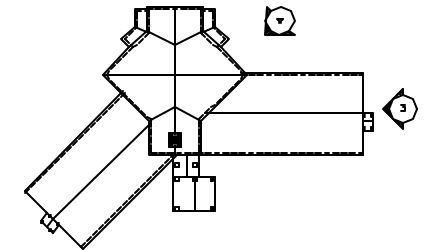


3 EXTERIOR ELEVATION
SCALE: 3/32" = 1'-0"



4 EXTERIOR ELEVATION
SCALE: 3/32" = 1'-0"



KEY PLAN
N.T.S.



FIRST BAPTIST CHURCH
TALLASSEE, ALABAMA



LifeWay Christian Resources of the Southern Baptist Convention
ONE LIFEWAY PLAZA NASHVILLE, TENNESSEE 37214

PHONE: 615-251-2465
FAX: 615-251-2894

Project No: 0310
Date: 11/12/02